

AN EXCLUSIVE OPPORTUNITY AWAITS YOU

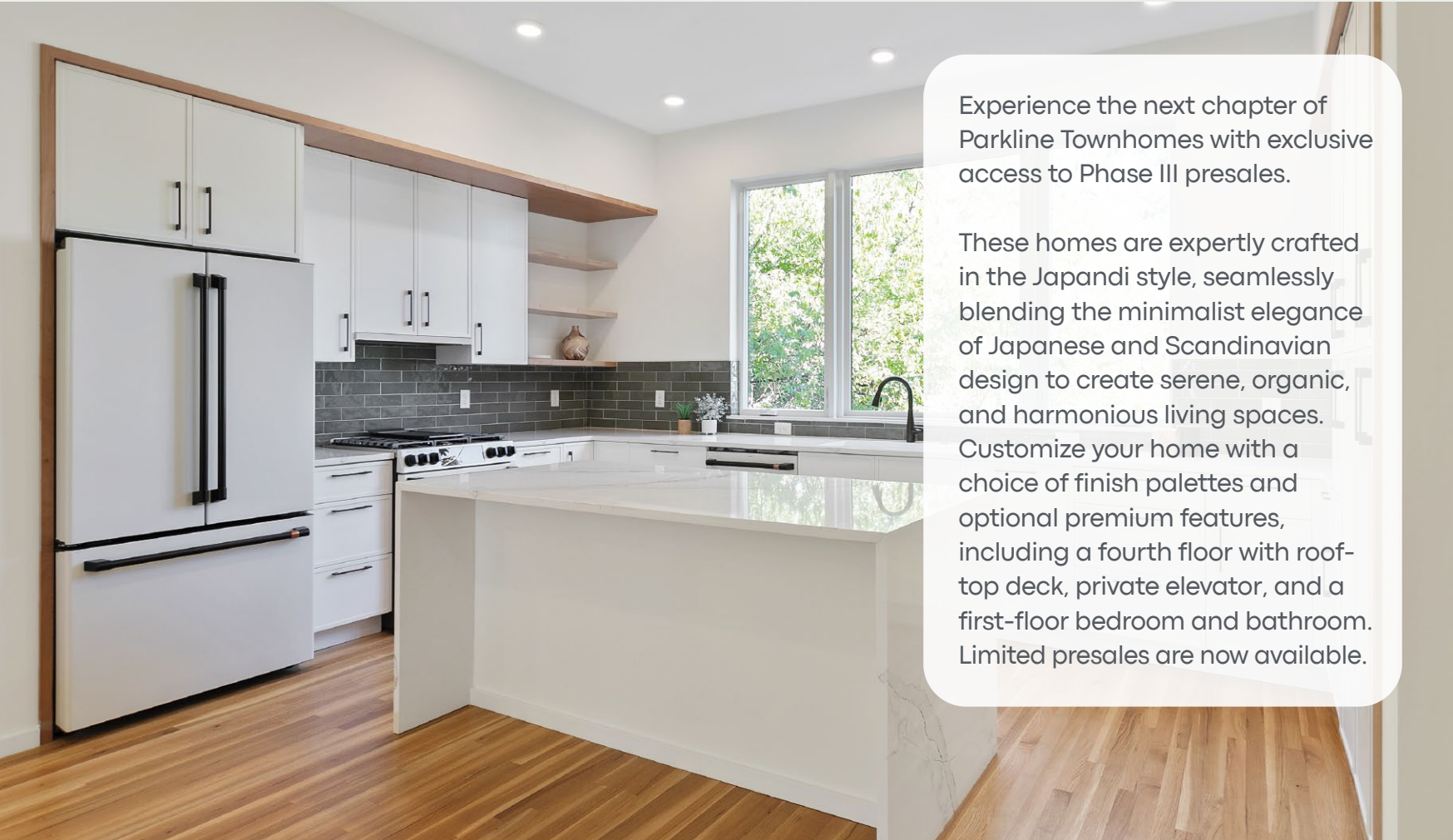


PARKLINE  
TOWNHOMES



Modern Rowhomes In The Heart of Richmond's Fan District

# Phase III Presales



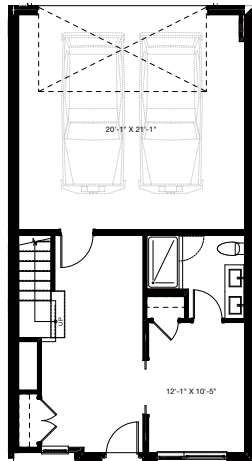
Experience the next chapter of Parkline Townhomes with exclusive access to Phase III presales.

These homes are expertly crafted in the Japandi style, seamlessly blending the minimalist elegance of Japanese and Scandinavian design to create serene, organic, and harmonious living spaces. Customize your home with a choice of finish palettes and optional premium features, including a fourth floor with rooftop deck, private elevator, and a first-floor bedroom and bathroom. Limited presales are now available.

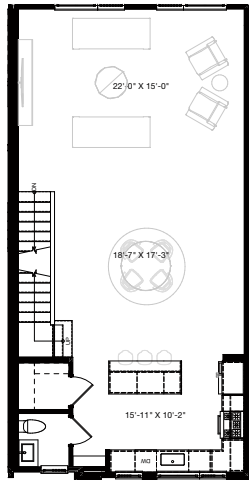
# The Monroe *(Base Model – 3 Floors)*

3 Bedrooms | 3 Full Baths | 1 Half Bath | 2 Car Garage  
Starting from the \$900s

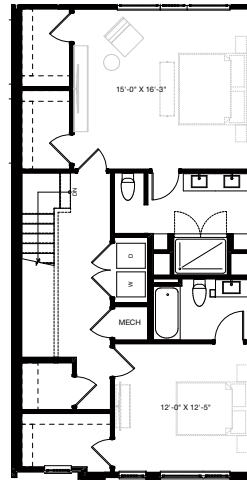
**FINISHED SQFT - 2,472**  
**TOTAL SQFT - 2,939**  
**GARAGE SQFT - 467**



FIRST



SECOND



THIRD



# The Monroe *(Concept Floor Plan – 4 Floors)*

3 Bedrooms + Flex Room | 3 Full Baths | 1 Half Bath | 2 Car Garage

*Shown with Optional Premium Features*

- 4th Floor w/ Bedroom, Full Bath and 2 Roof Decks
- Second Floor Center Kitchen
- Elevator

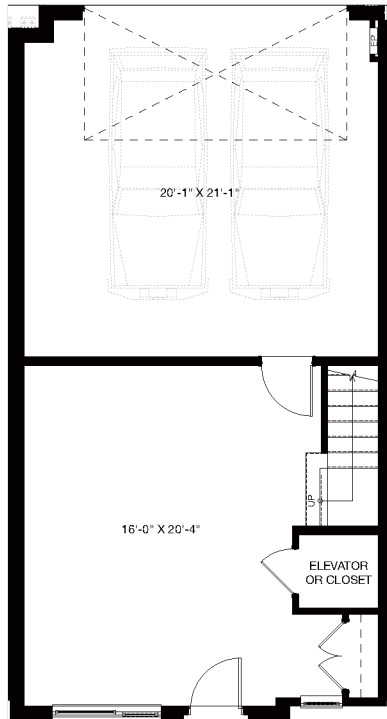
FINISHED SQFT - 3,133

TOTAL SQFT - 3,592

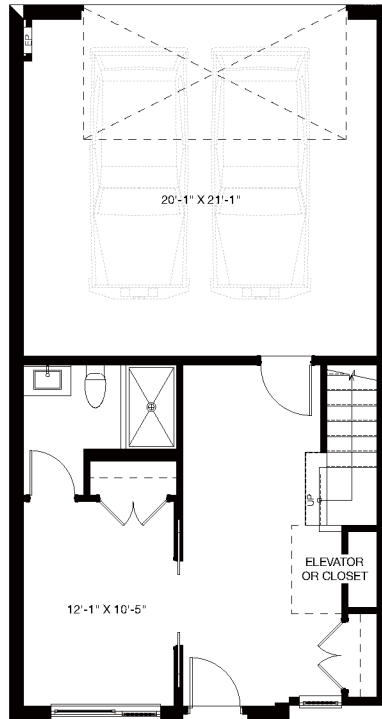
GARAGE SQFT - 459



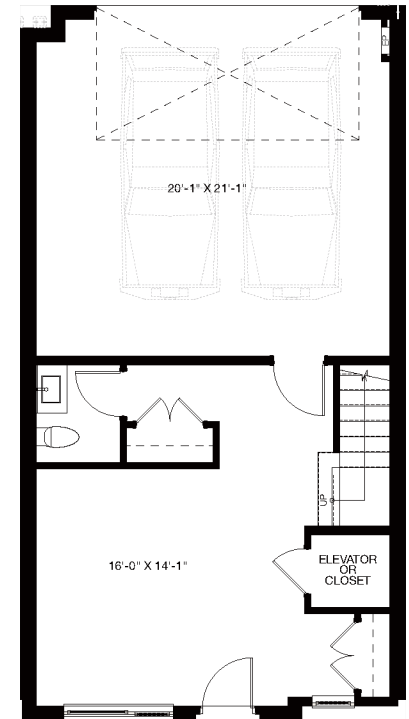
# The Monroe *(1st Floor Options)*



OPTION 1

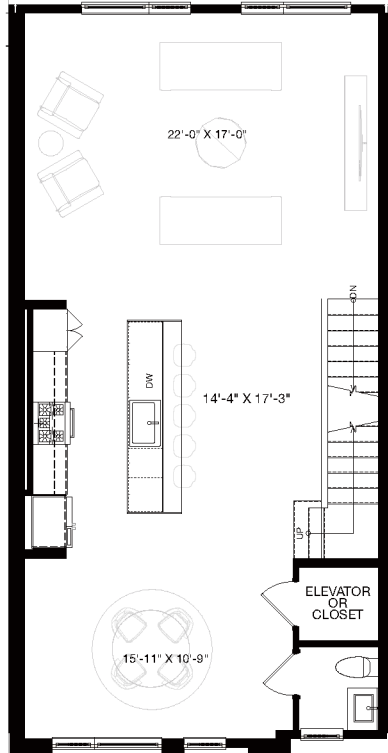


OPTION 2

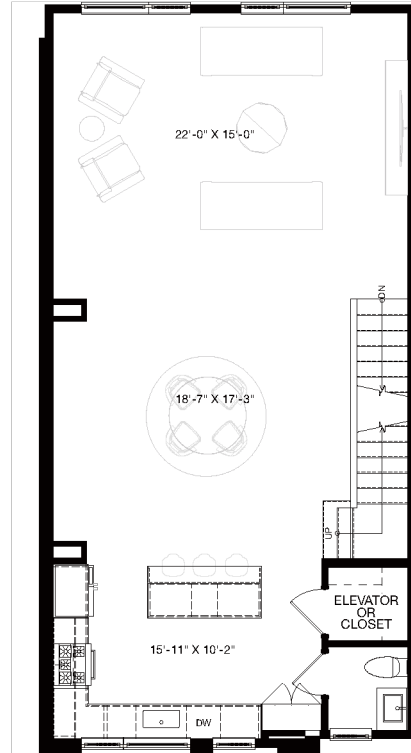


OPTION 3

# The Monroe *(2nd Floor Options)*

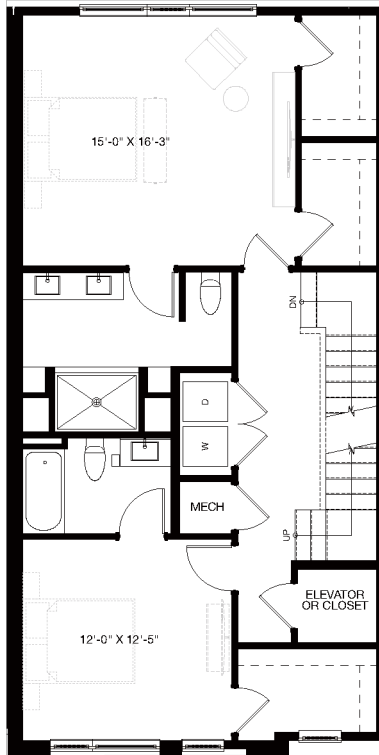


OPTION 1

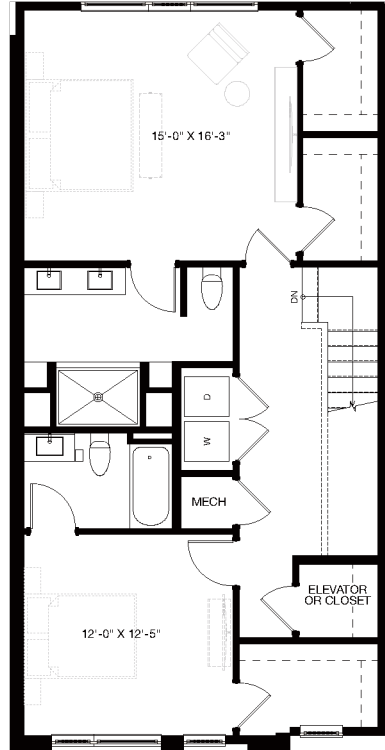


OPTION 2

# The Monroe *(3rd Floor Options)*

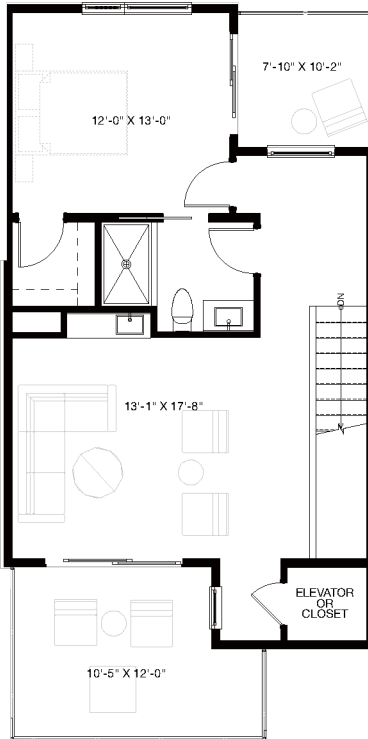


OPTION 1

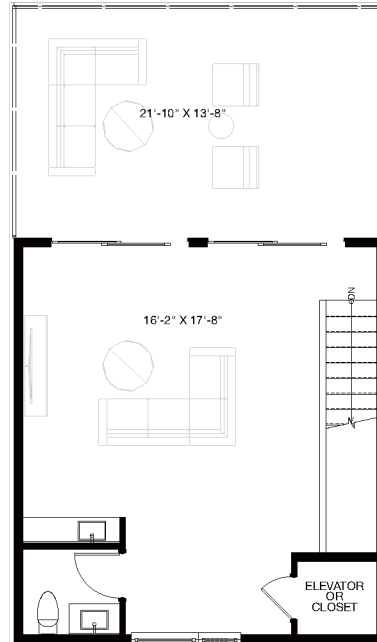


OPTION 2

# The Monroe *(4th Floor Options)*



OPTION 1



OPTION 2



# Finish Palette

## MIZU

**KITCHEN**

BRONZE FAUCET

BRONZE CABINET PULL

BLUE TILE BACKSPLASH

QUARTZ COUNTERTOP

OAK FLOORING

GLOSSY CABINET IN LINET 2312

WHITE MATTE CABINET

**PRIMARY BATH**

MARBLE PEBBLE TILE

MARBLE TILE SHOWER ENCLOSURE

QUARTZ COUNTERTOP AND BACKSPLASH

VANITY WOOD

**GUEST BATH**

CERAMIC FLOOR TILE

1.5" NICHE TILE

PORCELAIN TILE SHOWER ENCLOSURE

**HALF BATH**

OAK FLOORING

QUARTZ COUNTERTOP AND BACK SPLASH

VANITY WOOD

BRONZE FAUCET

## KOEN

**KITCHEN**

BRONZE FAUCET

BRONZE CABINET PULL

OLIVE TILE BACKSPLASH

QUARTZ COUNTERTOP

OAK FLOORING

WHITE MATTE CABINET

**PRIMARY BATH**

MARBLE PEBBLE TILE

MARBLE TILE SHOWER ENCLOSURE

QUARTZ COUNTERTOP AND BACKSPLASH

VANITY WOOD

**GUEST BATH**

CERAMIC TILE FLOORING

1.5" NICHE TILE

PORCELAIN TILE SHOWER ENCLOSURE

**HALF BATH**

OAK FLOORING

QUARTZ COUNTERTOP AND BACK SPLASH

VANITY WOOD

BRONZE FAUCET

## SUMI-E

**KITCHEN**

BRONZE FAUCET

BRONZE CABINET PULL

WHITE TILE BACKSPLASH

QUARTZ COUNTERTOP

OAK FLOORING

WHITE GLOSSY CABINET

**PRIMARY BATH**

MARBLE PEBBLE TILE

MARBLE TILE SHOWER ENCLOSURE

QUARTZ COUNTERTOP AND BACKSPLASH

VANITY WOOD

**GUEST BATH**

CERAMIC TILE FLOORING

1.5" NICHE TILE

PORCELAIN TILE SHOWER ENCLOSURE

**HALF BATH**

OAK FLOORING

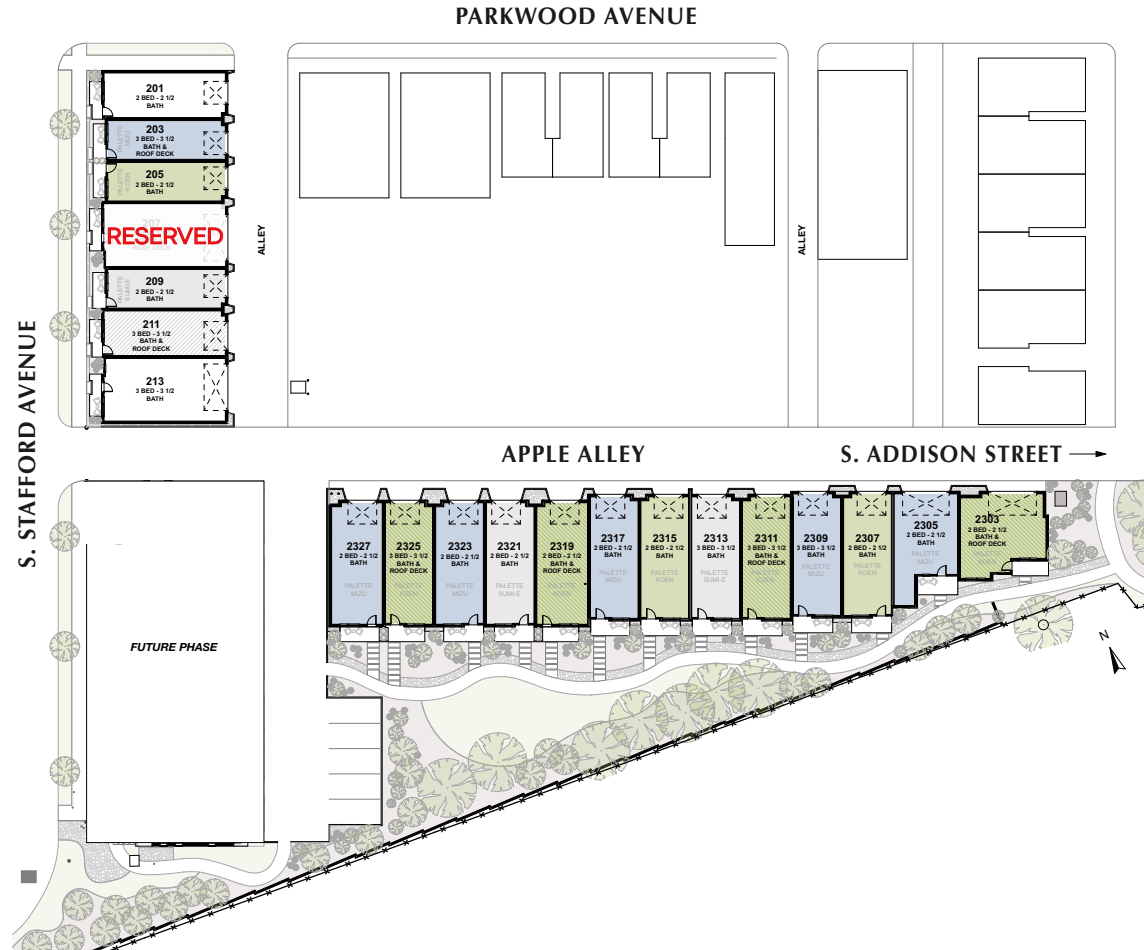
QUARTZ COUNTERTOP AND BACKSPLASH

VANITY WOOD

BRONZE FAUCET

# Site Plan

Phase III of Parkline Townhomes will be situated north of Apple Alley along S. Stafford Avenue by Parkwood Avenue. These new townhomes in Richmond's Historic Fan District offer a unique opportunity to embrace modern living in a historic and vibrant neighborhood, with all the benefits of brand-new construction. Immerse yourself in the best of Richmond, where vibrant parks, world-class museums, and renowned dining and shopping are just steps away, all within the calm embrace of this urban retreat.





# Location

Life at the Parkline offers a unique blend of urban convenience and small-town charm in Richmond's Historic Fan District. With iconic row houses, diverse architecture, and vibrant local shops, cafes, and restaurants, the neighborhood exudes timeless appeal. Just minutes away, Carytown provides an array of boutique shopping and dining experiences, while nearby Byrd Park serves as a tranquil escape for picnics, paddle boating, yoga at the Carillon, and lakeside walks. Here, you'll enjoy quick access to some of Central Virginia's most prized destinations.



# Contact Us



PARKLINE  
TOWNHOMES

*Limited presales available with this exclusive opportunity!  
Call today to schedule a private tour of our model home  
and discover the elegance and sophistication of Phase III.  
Contact us at 804.554.5630 or visit ParklineRVA.com.*



*We are pledged to Virginia's and HUD's equal opportunity housing policies. We will not discriminate based on race, color, religion, national origin, sex, elderliness, familial status, disability, sexual orientation, gender identity, or military status.*

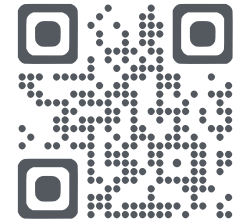
Samson Properties | 2314 West Main Street | Richmond, VA 23220 | 804.353.0009



Patrick Sullivan  
reRVA Real Estate



Nate Simon  
One South Realty Group  
powered by Samson Properties



ParklineRVA.com